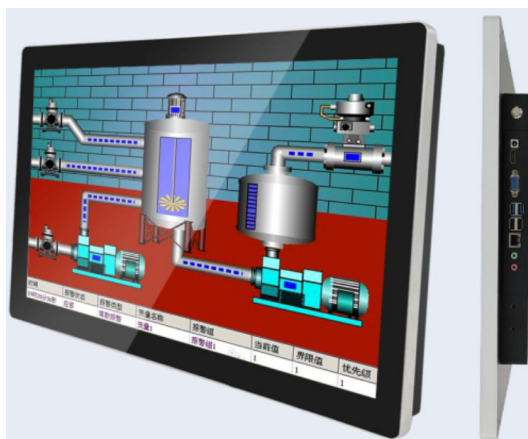


# TDD-TPC-CF150

## 15" Closed Frame PCAP Touch Panel PCs



### Overview

The **TDD Touch Panel PCs** include **Standard, Industrial (Open Frame Bezel-free | Rear Mount, Panel Mount, Closed Frame), Outdoor, Waterproof, Stainless Steel, Marine, Curved, Desktop POS, Commercial Displays, Medical and Custom** types, deliver a great computing solution when your application requires the PCs to be integrated into equipment. It can withstand harsh industrial environment with multiple I/O & expansion slots, rugged internal components & fanless cooling systems. Powered by Android or Intel with heavy-duty aluminum or steel enclosure, high durability & versatility for Kiosks applications from Self-service, Automated Parking, Industrial Automation, Outdoor Control, Healthcare to Gaming.

### Features

- Touch thru glass enabled with PCAP supports thickness up to 5mm
- Desktop or wall mount design with **Light Aluminum Frame & Steel Back**
- IP65 (front) for water and dust protection, flexible mounting in any table, kiosk, or cabinet design

### Specifications

#### System

Processor	Android: RK3188/RK3288/RK3566/RK3568 Quad-core Cortex-A9/A17/A55 1.6/1.8/ 2.0GHz Windows: Intel® J1900 / J4125 Quad Core 2.0 / 2.7GHz / Intel® Core™ i3 / i5 / i7 / i9 4-13 <sup>th</sup> G
Memory(RAM)	Android: 1 / <b>2GB(std)</b> / 4 / 8 / 16GB; Windows: DDR3/4 2 / <b>4(std)</b> / 8 / 16 / 32 / 64GB
Storage	Android: 4/8/ <b>16(std)</b> /32/64GB eMMC Flash; Windows: 32/64( <b>std</b> )/128/256/512GB SSD/HDD

#### Panel

Size / Active Area (mm)	15"(4:3), 38cm, Active matrix TFT LCD (LED) / 305.1 mm x 229.1 mm
Resolution / Contrast	1024 x 768 / 1000:1
Viewing Angle	Horizontal: 89° or 178° total / Vertical: 89° or 178° total
Color Depth/Brightness	16.7 million / 350 nits
Response Time / Freq	30 (Typ.)(Tr+Td) ms / Horizontal: 30 - 60 KHz / Vertical: 50 - 75 Hz

#### Touch

Touch Technology / OS	PCAP (Projected Capacitive) - 10 Touch Capacity / Windows / Android / Linux / Mac
Surface Treatment	Water, Dust & Vandal proof; <b>Optional:</b> Anti-glare, Anti-fingerprint, Anti-smudge, Anti-bacterial

#### I / O Ports

Android	USB x4 / COM x2 / HDMI x1 / LAN x1 / WIFI x1 / DC x1 / TF-CARD x1 / Audio x1
Windows	USB x4 / COM x2 / VGA x1 / HDMI x1 / LAN x1 / WIFI x1 / DC x1 / Audio x1 / Mic x1

#### Power

Supply / Consumption: 100-240 VAC / 12VDC +/- 5%; 20W typical, 1.5W sleep, 0.5W off

#### Mechanical

Product Dimensions: 344.8 x 268.8 x 42.7mm / Weight (Unpacked/Packed): 2.8 / 3.9 kg  
Box Dimensions: 450 x 188 x 380mm / VESA Mounting: 75 x 75 / 100 x 100mm

#### Environmental

Operating / Storage Temperature: -10°C to 50°C / -20°C to 60°C

#### Accessories

Power adapter / cable, wall mount brackets w/screws (opt.)

#### Others

MTBF / Warranty / Enclosure Color: 50,000 hours demonstrated / 1-year / black | silver  
Ready for Use: 24/7

\* **TDD** ([www.tddtouch.com](http://www.tddtouch.com), [sales@tddtouch.com](mailto:sales@tddtouch.com)) reserves the right to change specifications without prior notice.